



**Golden Orb**  
The Granary, Western Court  
Bishops Sutton  
Alesford  
Hampshire  
SO24 0AA  
www.goldenorb.com

Road

Old Stratford Roundabout

Carriageway

Roundabout

**Description of Works:**

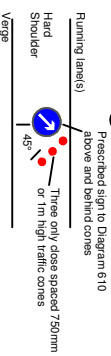
Traffic Management  
Outer Ring Management  
Full Closure of A422 and Towcester Road

**Notes:**

1. All signs and cones to be in accordance with Chapter 8-2009, the TSRGD and current IAN's.
2. Works access and egress are indicative, exact locations to be agreed on site.
3. Safety zones are to be installed as required.

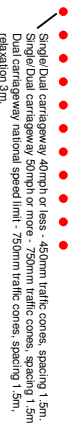
**Chapter 8 Details**

**DETAIL A**



Notes:  
1) During darkness, a single warning light to BS EN 12352:2006 should be provided.  
2) Traffic cones should conform to diagram 7101.1 and to BS EN 3422

**DETAIL B**



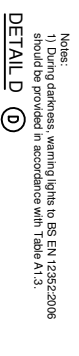
Notes:  
1) During darkness, warning lights to BS EN 12352:2006 should be provided in accordance with Table A1.3 (Appendix 1).  
2) 45° tapers have 1.5m spacing, no relaxations.  
3) On motorways and TRSLAP duals with hard shoulders, 1m spacing is required. For dual carriageways with hard shoulders for heavy haulage and the facing wall of lane changes.

**DETAIL C1**



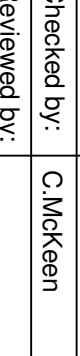
Notes:  
1) During darkness, warning lights to BS EN 12352:2006 should be provided in accordance with Table A1.3 (Appendix 1).  
2) For relaxation to Detail C1 see Table A1.3 (Appendix 1).

**DETAIL C2**



Notes:  
1) During darkness, warning lights to BS EN 12352:2006 should be provided in accordance with Table A1.3 (Appendix 1).  
2) Detail D applies only to relaxation cases.

**DETAIL D**

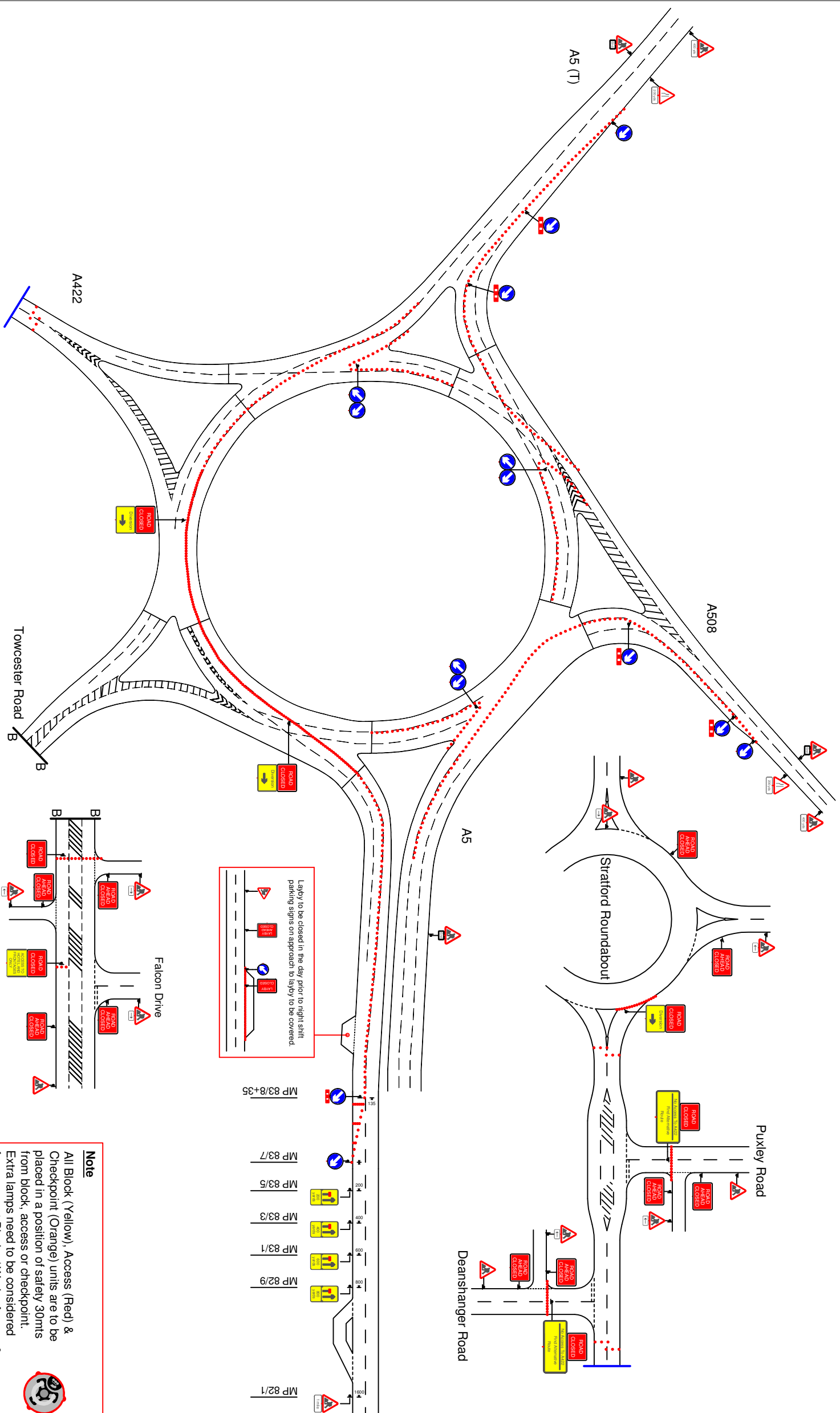


Notes:  
1) During darkness, warning lights to BS EN 12352:2006 should be provided in accordance with Table A1.3 (Appendix 1).  
2) Detail D applies only to relaxation cases.

Drawn by:	L.Johnson
Checked by:	C.McKeen
Reviewed by:	
Date:	11.01.2018
Scale:	Not to Scale
Job No.:	
Client:	

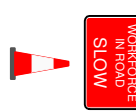
**CHEVRON**

Drawing No:  
560371-CTM-OLDSTRATFORDROUN  
DABOUT-SCENARIO-B-REVA



**Note**  
All Block (Yellow), Access (Red) & Checkpoint (Orange) units are to be placed in a position of safety 30m from block, access or checkpoint. Extra lamps need to be considered for verges at Blocks / Works Access & Checkpoints on site visits.  
Intelligence blue unit to be placed in work area.

**Note:**  
Sign with cone and flashing light to be placed in advance of first warning sign in a suitable location



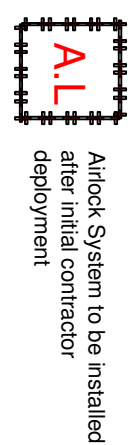
**Note:**  
LTMO/Foreman to risk assess if sign is required on exit slips and suitability of location



**Note:**  
Hatched Area represents works area



**Note:**  
Airlock System to be installed after initial contractor deployment



**Site Specific Notes:**  
Drawing to be used with:  
560371-CTM-OLDSTRATFORDROUNDABOUT-SCENARIO-B-REVA-DIV  
560371-CTM-OLDSTRATFORDROUNDABOUT-SCENARIO-B-REVA-DIV2  
560371-CTM-OLDSTRATFORDROUNDABOUT-SCENARIO-B-REVA-DIV3